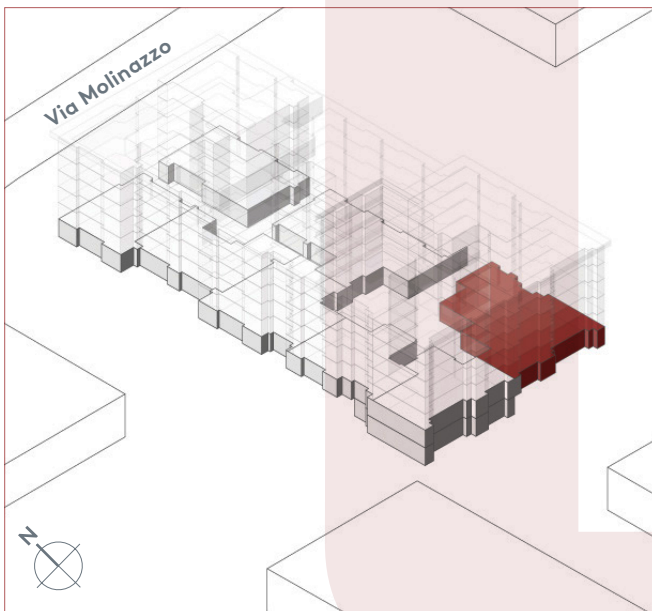
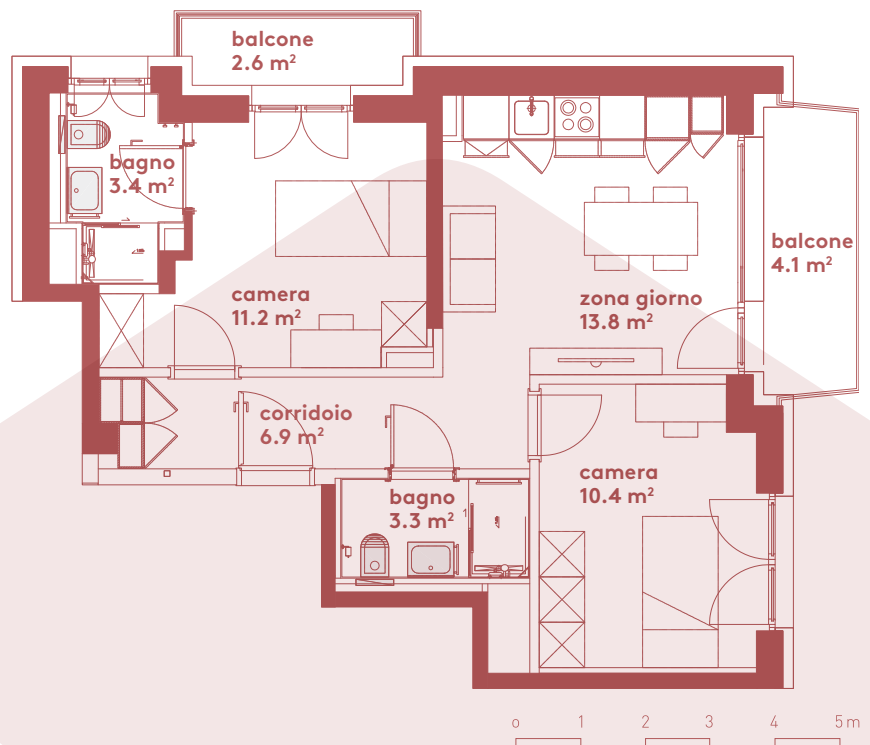


## App. B.06

- 3.5 locali
- 49 m<sup>2</sup>
- piano terra



<b>Locali</b>	<b>3 ½</b>
<b>Superficie</b>	<b>49 m<sup>2</sup></b>
Zona giorno	13.8 m <sup>2</sup>
Balcone zona giorno	4.1 m <sup>2</sup>
Bagno	3.4 m <sup>2</sup>
Camera	11.2 m <sup>2</sup>
Balcone camera	2.6 m <sup>2</sup>
Camera	10.4 m <sup>2</sup>
Bagno	3.3 m <sup>2</sup>
<b>Pigione netta</b>	<b>1'210 fr.</b>
<b>Acconto spese</b>	<b>160 fr.</b>
<b>Pigione lorda</b>	<b>1'370 fr.</b>