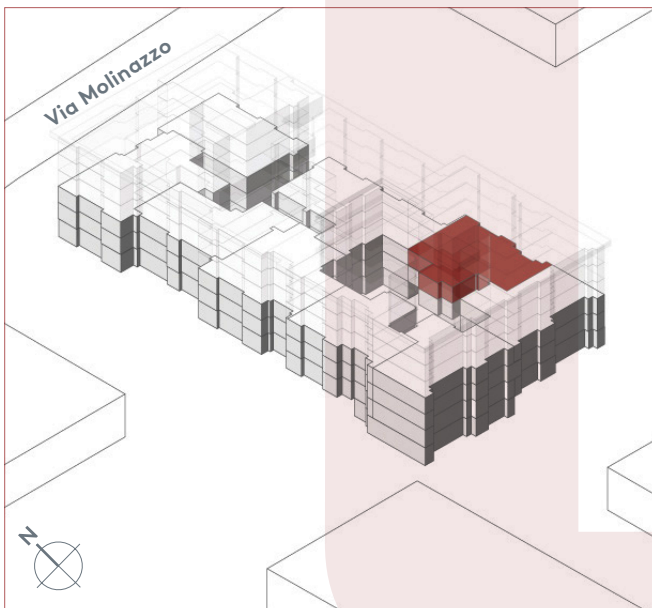
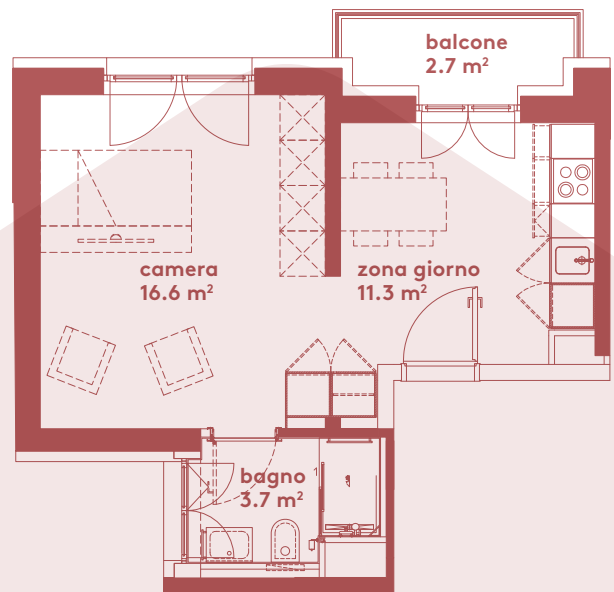
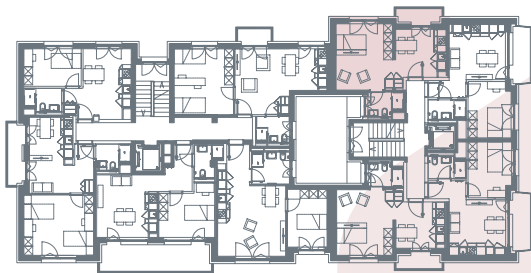


App. B2.06

- 1.5 locali
- 31.6 m²
- piano 2



Locali	1 ½
Superficie	31.6 m²
Zona giorno	11.3 m ²
Balcone	2.7 m ²
Camera	16.6 m ²
Bagno	3.7 m ²
Pigione netta	980 fr.
Acconto spese	120 fr.
Pigione lorda	1'100 fr.